

Epangelo Mining Company (Pty) Ltd
Company Profile
2013



Investing on Solid Ground

About Us

Epangelo Mining Company (Pty) Ltd (Epangelo) is a private company with the Government of the Republic of Namibia as the sole shareholder. Epangelo was founded in 2008 and inaugurated on the 3rd of December 2009. The company was established as a flagship to respond to the aspirations of government for increased Namibian participation. It operates under various mineral policies and regulations such the Minerals (Mining and Prospecting) Act No. 31 of 1992 and Mineral Policy of 1998 respectively.

It is befitting to state that Epangelo is formed against the background of fulfilling Namibia's above-mentioned mineral development objectives, including direct participation of the Government of the Republic of Namibia in mining and, subsequently, in the value addition chain of the country's minerals. Epangelo places emphasis on strategic minerals such as diamonds and nuclear fuels but its mandate stretches beyond the confines of strategic minerals and involves interests in exploration of base metals, mining investment as well as trading and beneficiation of mineral products.

Epangelo is further also established to be one of the country or regions' premier mining suites, which would have a portfolio or 'best-in class' mining as well as metal deposits. Through the conduit of own initiative projects venture, acquisitions, the company shall ensure and harness its niche in the local or regional mining sector.



Company overview

VISION AND MISSION

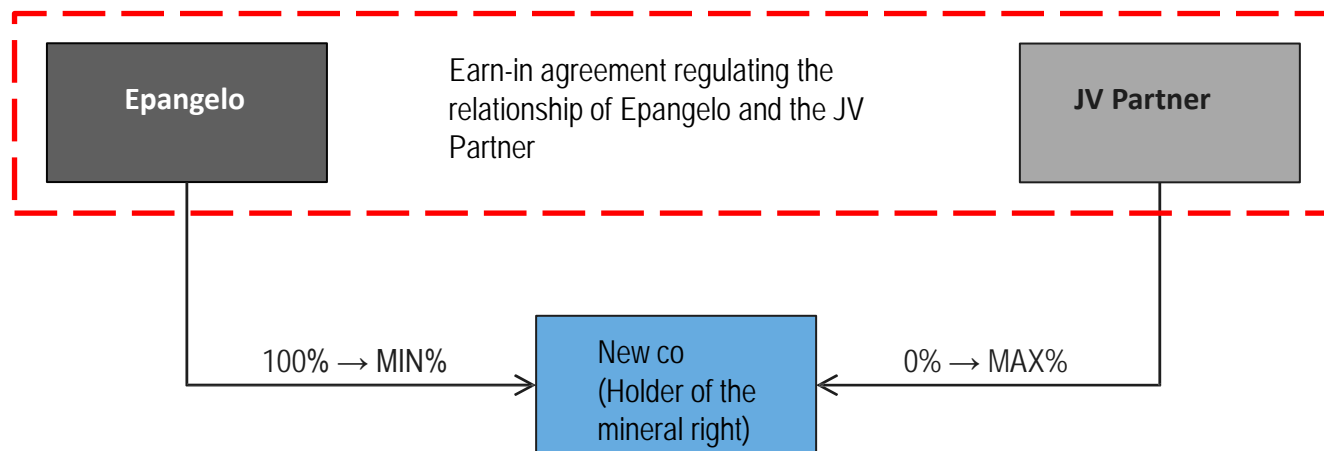
The company strives to be the leading, diversified mining company in Namibia, whilst ensuring national participation in the discovery, exploration and beneficiation of Namibia's mineral resources. It is also the mission of the company to develop and consolidate a diverse portfolio of high quality assets and services for the benefits of its stakeholders.

OUR VALUES

- **Trust** – we will always be honest, fair, transparent and trustworthy in everything we do.
- **Care** – we are committed to ensuring safety, health, environmental and sustainable development and utilisation of Namibia's resources.
- **Excellence** – we will ensure attainment of excellence and results, through innovation and high quality service delivery to all stakeholders.
- **Empowerment** – we shall enter into relationships which focus on the empowerment of the Namibian people and value creation for all parties.
- **Teamwork** – teamwork is the key to our success, with both internal and external stakeholders.

Our Strategy – Current EPLs

Earn-in joint venture structure

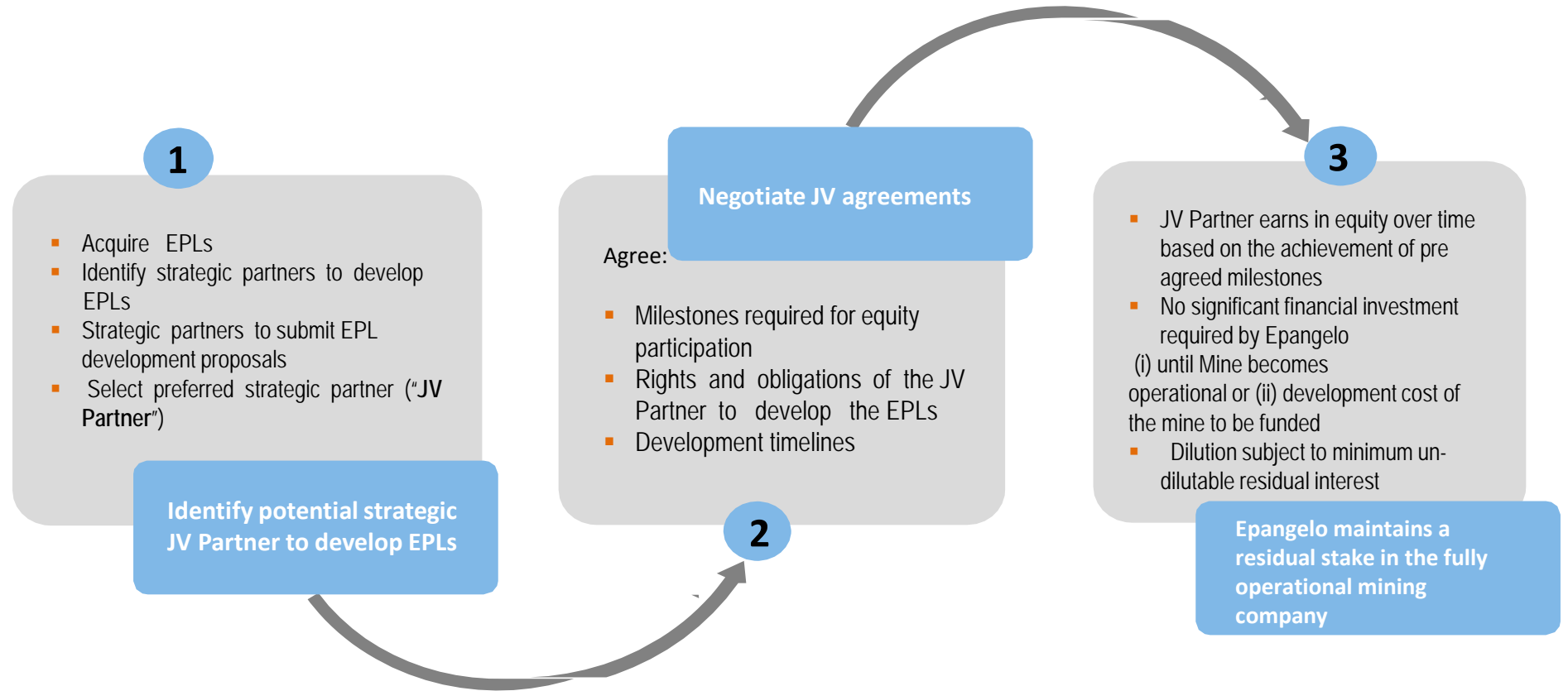


General principles

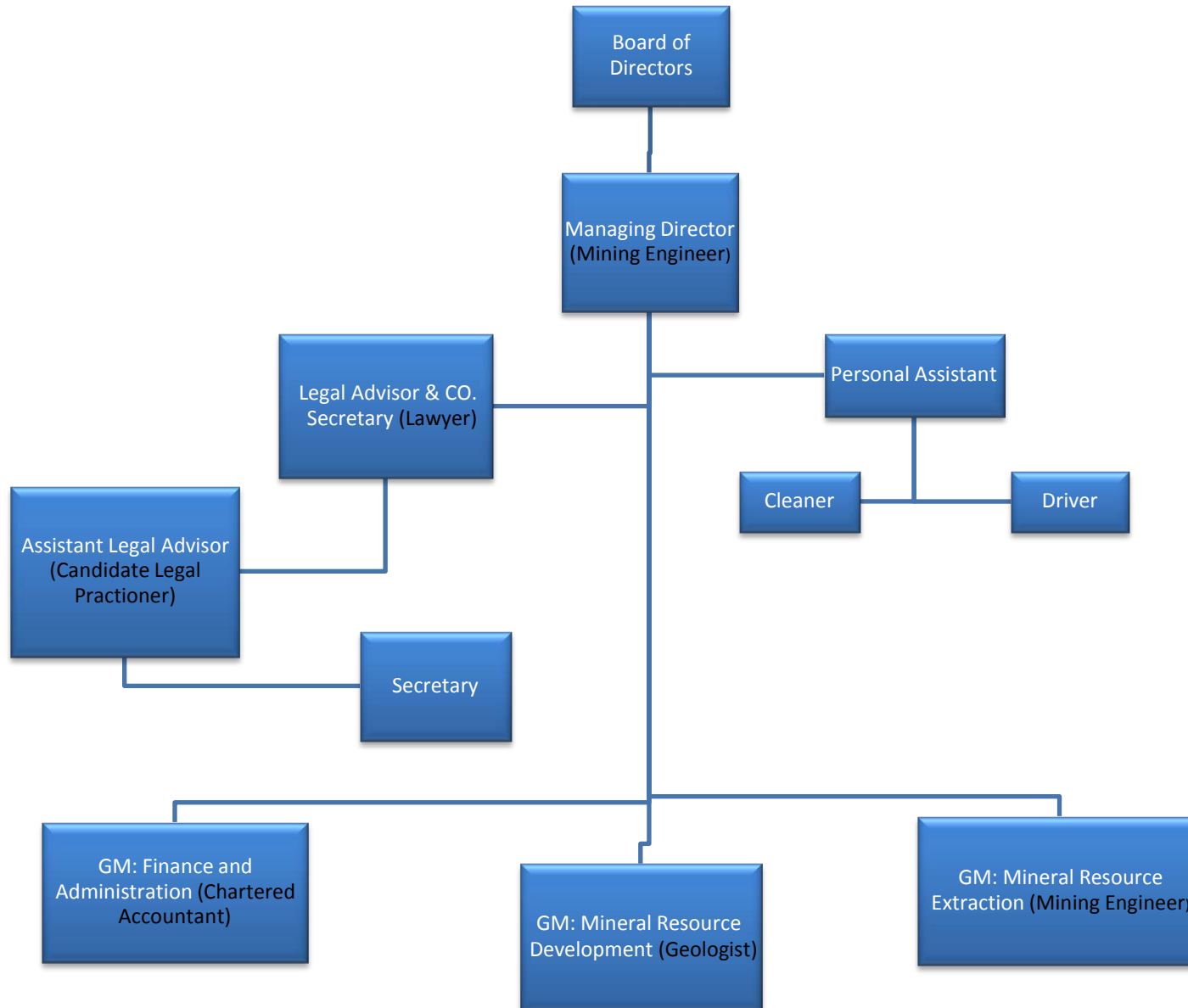
- Epangelo enters into an **Agreement** (“earn-in agreement”) with the JV Partner to:
 - Form a new company (New Co.) with Epangelo holding 100% of the share issued
 - Transfer EPL to New Co.
 - Develop the EPL
 - Achieve key milestones/targets which will result in the dilution of Epangelo shares to an agreed minimum

Our Strategy – Strategic Minerals

Recognises Epangelo's position as the owner of the unissued EPLs for strategic minerals



Organization structure



Board of Directors

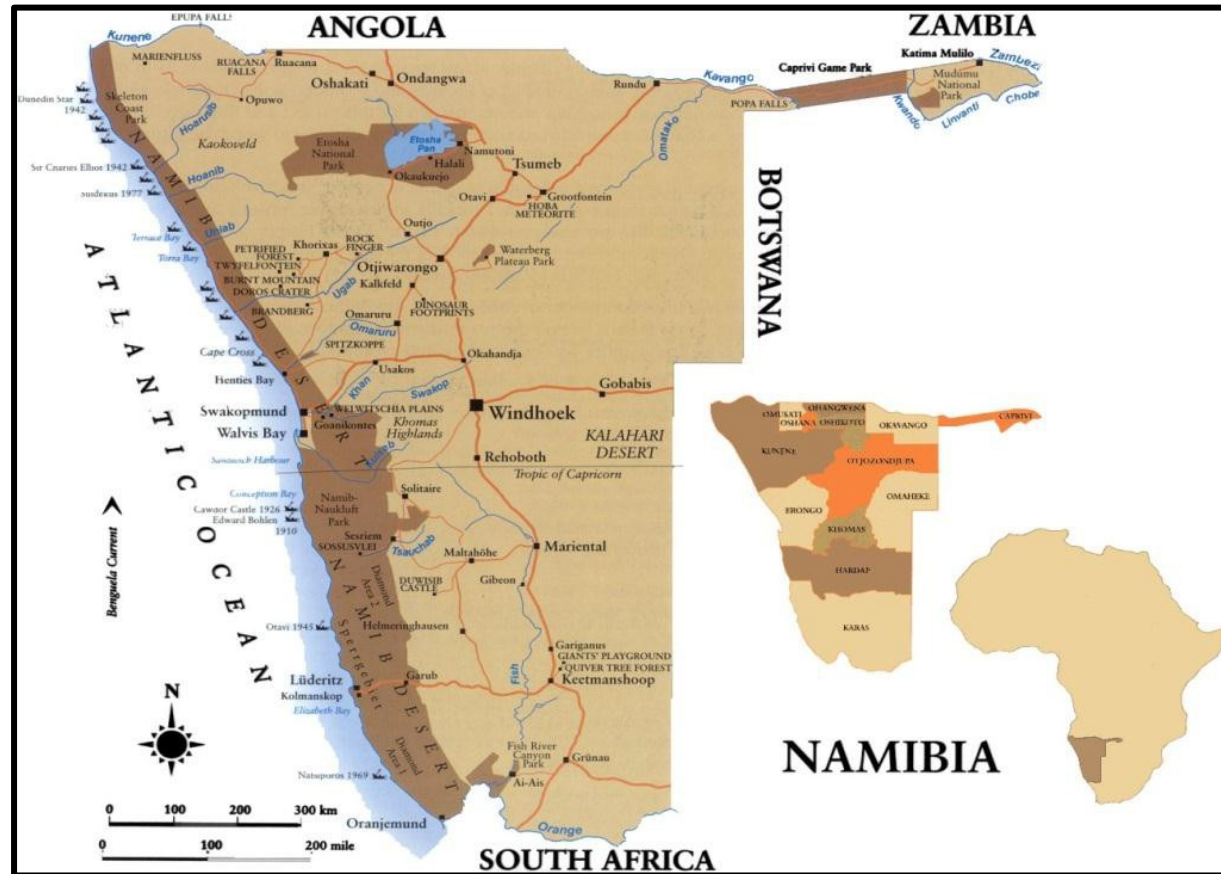
<p>Adv. Mandi Ellaine Samson Chairperson</p>	<p>Adv. Samson previously served in the Office of the Attorney-General of the Republic of Namibia as a Principal Legal Officer. She served as General Manager: Corporate & Legal Services at the Namibia Airports Company before starting her own Legal Firm. She is a Trustee of the Government Institutions Pensions Fund (GIPF), a Trustee of the GIPF Employees Pension Fund (GEPF), and a Commissioner of the Minerals Ancillary Rights Commission (MARC).</p>
<p>Roger Matthew Gertze Director</p>	<p>Mr Gertze is currently the CEO of Multichoice Namibia and has 17 years of professional experience. He was a Chief Internal Auditor at City of Windhoek. Mr Gertze was a member of the Audit Committee of NAMFISA during his term as a board member of NAMFISA, He is currently serving as Chairperson of the Remuneration Committee and as a member of the Audit Committee of Telecom Namibia Limited.</p>
<p>Helena Itamba Director</p>	<p>Ms Itamba is currently the Deputy Director - Controlled Minerals and Minerals Development Division in the Ministry of Mines and Energy Counterpart to the National Project: Development and formulation of Uranium Mining and Nuclear Policy and Regulatory Framework. She represents the Ministry on NDP III focal person for Mining Sector and is the Director of the Atomic Energy Board. She has served in the Ministry of Mines and Energy as Chief Mineral Economist, Assistant Mineral Economist, in the Ministry of Finance as Customs Officer, Section Audit of Enterprises; in the Ministry of Justice she served as a Legal Clerk, in the Criminal Court.</p>
<p>Mathews Amunghete Director</p>	<p>Mr. Amunghete has over 8 years in mining experience range from Marine Diamond Mining, Open Cast Mining, Underground Mining and Shaft Sinking coupled with over 6 years administrative skills in Public Service at both Professional and Management levels and he is currently a Chief Inspector of Mines in the Ministry of Mines and Energy which oversees all mining and prospecting operations in Namibia. Mr. Amunghete serves as a Director of DeBeers Marine Namibia.</p>

Management Team

<p>Eliphas Hawala Managing Director</p>	<p>Mr. Hawala graduated from Colorado School of Mines, Golden, Colorado, USA, with a Bachelor of Science degree in Mining Engineering and a Certificate in International Political Economy. His experience outside the public service has mainly been with Namdeb Diamond Corporation where he was a Mining Engineer, and General Manager at NamGem. Mr. Hawala is a holder of a Mine Manager's Certificate of Competency (South Africa). He is also a board member of Swakop Uranium.</p>
<p>Etuna Josua Corporate Legal Advisor and Company Secretary</p>	<p>Mr. Josua is a Lawyer and has 8 years experience in the legal profession. His duties at Epangelo include rendering legal advice, drafting and scrutinizing contracts, liaising with stakeholders in the legal profession and serving as the chief compliance officer.</p>
<p>Ndapandula Tshitayi General Manager – Finance and Administration</p>	<p>Ms Tshitayi is a qualified Chartered Accountant (CA) with over 9 years of financial solid managerial level experience obtained in the financial and auditing environment. Her duties at Epangelo amongst others are to implement and maintain investment criterion and projects finance strategy. Furthermore, she is responsible for evaluating all investment proposals, managing all work associated with the company's corporate finance, risk management and corporate governance.</p>
<p>Vilho Hanghome General Manager – Mineral Resource Development</p>	<p>Mr. Hanghome is an experienced Geologist with over 7 years of experience. Vilho has extensive knowledge of the Alaskite and calcrete hosted Uranium deposits, sediment hosted copper system and porphyry copper system. His duties are to identify mineral resource projects for acquisition and development, manage and co-ordinate all technical objectives in line with company strategy.</p>
<p>Phillip Pendukeni General Manager – Mineral Resource Extraction</p>	<p>Mr Pendukeni is a Mining Engineer by profession, with 21 years experience in mining industry. He is well versed with many types of mining and extraction methods for various commodities and different mining environments, such surface mining, underground mining and dredging. He is in charge of mining, metallurgy and engineering functions of Epangelo Mining Company.</p>

Country (Namibia) overview

- Investor friendly destination
- Excellent infrastructure
- Highly organised geo-database through the Geological Survey of Namibia
- Political stable country in the world
- Consultative mining legislation and tax regime

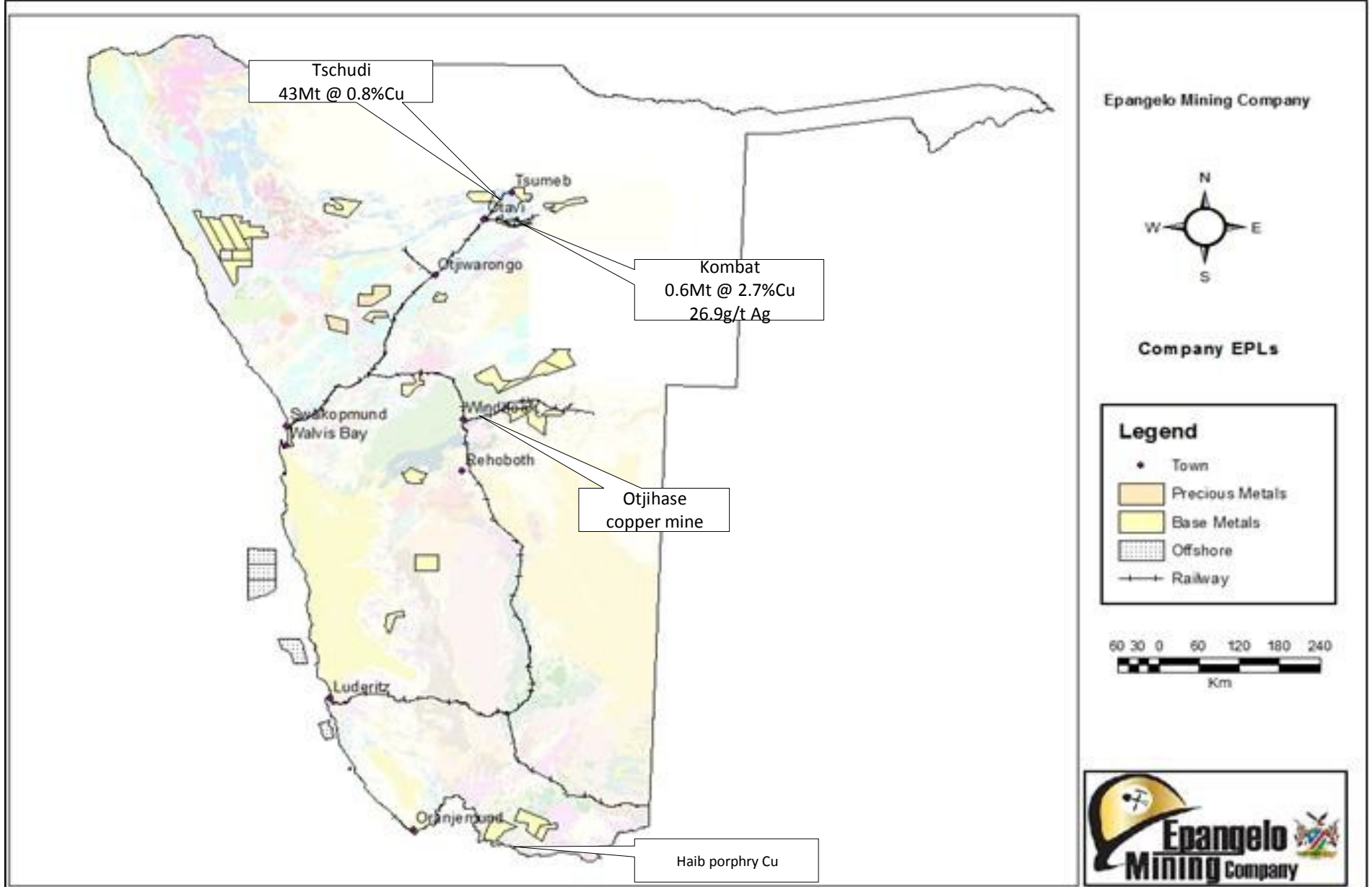


Vast range of industries i.e Tourism, Agriculture etc.

Mining accounts for 8% GDP

Namibia is a 5th producer of uranium in the world

Exclusive Prospecting Licences (EPLs)



List of EPLs

EPL_Number	Commodities	Licence_Status
4791	Base, REEs, Precious Metals	Pending
4792	Base, REEs, Precious metals	Granted
4793	Base, REEs, Precious metals	Granted
4802	Base, REEs, Precious metals	Granted
4803	Base, REEs, Precious metals	Granted
4804	Base, REEs, Precious metals	Granted
4782	Base, REEs, Precious metals	Granted
4778	Off shore Precious stones	Granted
4779	Off shore Precious stones	Granted
4780	Off shore Precious stones	Granted
4781	Off shore Precious stones	Pending
4783	Off shore Precious stones	Pending
4784	Off shore Precious stones	Granted
4785	Off shore Precious stones	Granted
4786	Off shore Precious stones	Granted
4816	Base, REEs, Precious metals	Granted
4817	Base, REEs, Precious metals	Granted
4818	Base, REEs, Precious metals	Granted
4833	Base, REEs, Precious metals	Granted
4854	Base, REEs, Precious metals	Granted
4855	Base, REEs, Precious metals	Granted
4858	Base, REEs, Precious metals	Granted
4859	Base, REEs, Precious metals	Granted
4860	Base, REEs, Precious metals	Granted
4879	Base, REEs, Precious metals	Granted
4880	Base, REEs, Precious metals	Granted
4882	Base, REEs, Precious metals	Granted
4896	Base, REEs, Precious metals	Granted
4897	Base, REEs, Precious metals	Granted
4923	Base, REEs, Precious metals	Granted
4924	Base, REEs, Precious metals	Granted
4925	Base, REEs, Precious metals	Granted
4926	Base, REEs, Precious metals	Granted
4950	Base, REEs, Precious metals	Pending
5028	Base, REEs, Precious metals	Pending
5029	Base, REEs, Precious metals	Pending
5030	Base, REEs, Precious metals	Pending

List and map of EPLs can be downloaded from Ministry of Mines and Energy website:

<http://www.mme.gov.na/>

- Regional geological and geophysical data interpretation is currently underway, to generate targets on each respective EPL.
- Desktop studies and historical data interpretation of these 4 EPLs (EPL 4792, 4793, 4802 and 4804) was completed
- Planned soil sampling and regional mapping

Contact us

Head Office

Mutual Platz Building, 2nd Floor
Post Street Mall Windhoek,
Namibia

Telephone: +264 61 415 700

Fax: +264 61 415 701

Email: info@epangelomining.na

Website: www.epangelomining.com

Investing on Solid Ground

